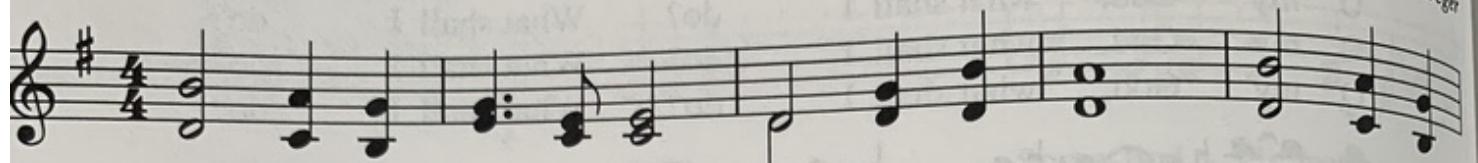


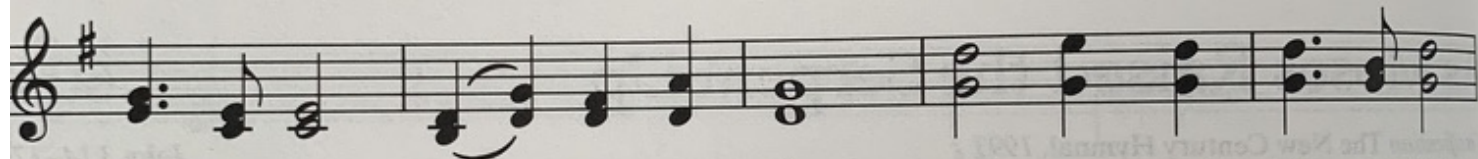
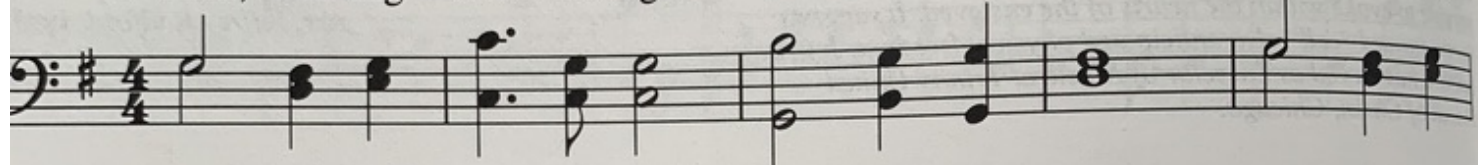
Nearer, My God, to You

Gen. 28:10-22; Matt. 16:24

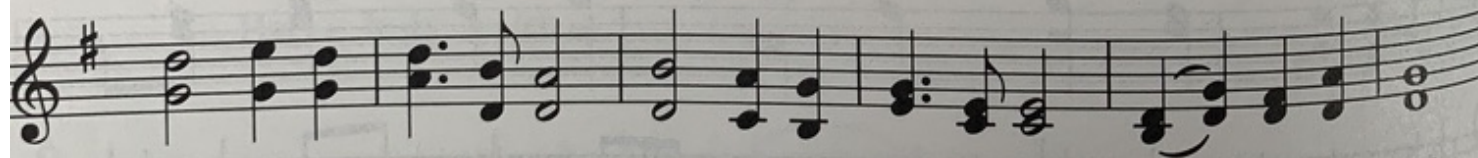
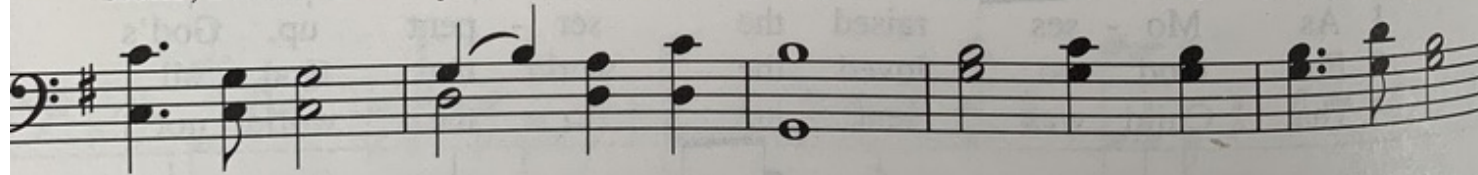
Sarah Flower Adams, 1841
Adapt. Thomas H. Troeger



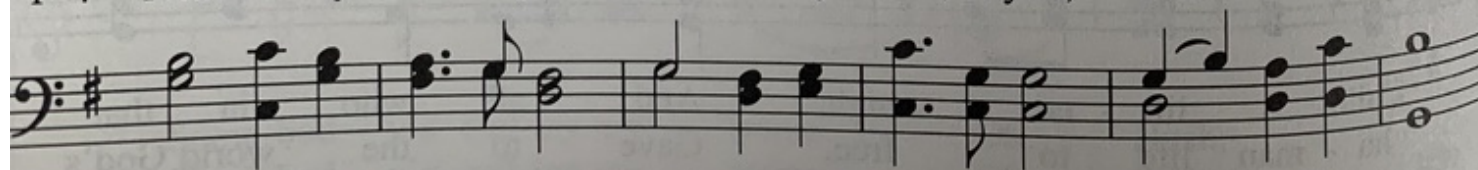
1 Near - er, my God, to you, near - er to you. I'll bear the
 2 When I am wan - der - ing as Ja - cob did, and in the
 3 Let Ja - cob's lad - der fill the sky a - bove, and an - gels
 4 Then, wak - ing from the night to morn - ing air by Beth - el's



cross as Christ calls me to do and pray each day a - new:
 deep - est night the path is hid, my dreams will bring me, too,
 car - ry down the faith and love to keep this goal in view:
 stone, I'll know you heard my prayer, and how my yearn - ing grew:



1-4 Near - er my God, to you, near - er my God, to you, near - er to you.



Sarah Flower Adams, daughter of a well-known English editor, was a successful actress in London. During her short life she wrote prose and poetry for religious publications, a five-act drama, and a children's catechism.

Tune: BETHANY 6.4.6.4.6.6.6.4.
Lowell Mason, 1856